

WorkCentre®
5325 / 5330 / 5335
Tabloid-size
Black-and-white
Multifunction Printer



Xerox® WorkCentre®
5325 / 5330 / 5335
Multifunction Printer
Optimized office efficiency



WorkCentre® 5325 / 5330 / 5335 Multifunction Printer

The highly modular WorkCentre 5300 series multifunction printer gives today's fast-paced office environments a critical productivity advantage. The tasks you perform daily become more efficient, while intensive workplace processes are optimized with customizable workflow solutions that easily handle your unique business requirements.

Reduce costs with superior workgroup efficiency

With exceptional copier performance and the option of adding powerful printing, scanning and faxing, the WorkCentre 5300 series is built to perform as a consistently high level. Plus, multiple levels of cost-control capabilities let you easily manage expenses by limiting, tracking and assigning costs.

- **Faster results.** Print and copy speeds of up to 35 ppm keep pace with even the busiest environments.
- **Automated workflows.** Save time and increase efficiency with convenient features that automate routine tasks. For example, Fax Forward to Email automatically sends your incoming faxes from the device directly to your computer's email in-box.
- **Powerful scanning.** Improve the way you work with a host of scanning features, such as Scan to Folder¹, Network Scanning¹, Scan to Text-searchable PDF¹, and standard color scanning. Convert hard copies into digital files for automatic routing and archiving. Preview scans and documents stored on the device right on the color touch screen, and you can access documents faster with advanced file compression that dramatically shrinks file sizes.
- **Walk-up simplicity.** Scan to/print from USB functionality lets you print from and scan to a USB memory device for faster document delivery when you're not at your computer.
- **Limit and track usage.** With Xerox Standard Accounting, administrators can set limits for individual users on the number of print, copy, scan, and fax jobs, and account for device activity at the user, group or department level.
- **Experience true multitasking.** The WorkCentre 5300 series lets users perform five tasks at once: RIP, receive, program ahead, process the queue, and transmit. This advanced capability lets you copy, print, scan or fax even while other jobs are running.

Total peace of mind

The WorkCentre 5300 series features state-of-the-art technologies for optimized security at the device and on the network.

- **Keep your documents safe at all times.** With Secure Print, jobs are stored in a separate queue until the intended recipient chooses which jobs to release for printing. Plus, users can convert hard copies to secure digital files with the Scan to Password-protected PDF feature.
- **Prevent unauthorized access.** Powerful features such as standard network authentication², with available technologies like Secure Access Unified ID System® and Common Access Card Enablement Kit, ensure only authorized users can access the device.
- **Maintain information integrity.** 256-bit hard disk encryption and overwrite uses the FIPS 140-2 standard to ensure your data stays secure.
- **Stay secure.** Sensitive data stays private over your network thanks to network authentication and encrypted email, plus built-in support for IPsec, 802.1X and SNMPv3.0 — the latest security protocols.

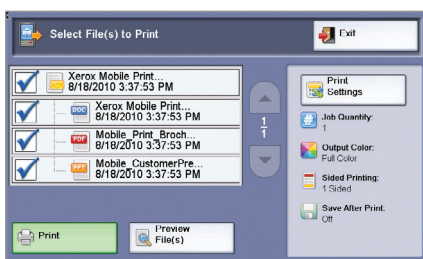
The right fit for every environment

The space-saving WorkCentre 5300 series benefits your office and the outside world, with cutting-edge engineering that delivers big reductions in energy consumption.

- **Smaller footprint.** Save valuable office space with a device that's just the right fit.
- **Quiet operation.** The WorkCentre 5300 produces less noise, letting you keep the device close by for distraction-free convenience.
- **Xerox technology advantages.** Our EA Toner with low-melt technology achieves minimum fusing temperature at 68 degrees F (20 degrees C) less than conventional toner. Plus, our LED scanner consumes just one-third the power of traditional Xenon lamps. You get significant energy savings and brilliant, glossy output — even on ordinary paper.
- **Standard duplexing.** The WorkCentre 5300 series comes with standard two-sided printing, helping you save paper and money.
- **ENERGY STAR® qualified.** The WorkCentre 5300 series meets the stringent ENERGY STAR requirements for energy usage.

¹ With Network Scan Kit; ² Copier/printer/scanner only.

Xerox® Workflow Solutions take your WorkCentre 5300 series multifunction printer to a higher level of office optimization.



Xerox® Mobile Print Solution is just one of many personalized solutions you access right from the touch screen interface.

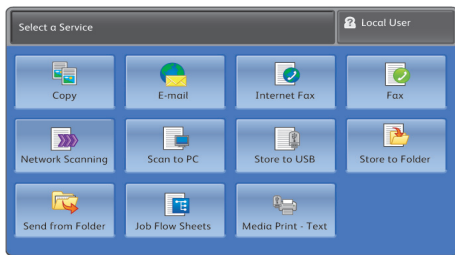
Transform the way your organization gets vital work done with the power of Xerox Workflow Solutions. When people work efficiently, in less time and with fewer steps, productivity goes up. Stress goes down. So do errors. Whether you have only a few people on your team or a very large workgroup, Xerox knows it's about streamlining your workflow — and it starts by using Xerox® Workflow Solutions right from your WorkCentre 5300 series device.

Xerox® Mobile Print Solution

With Xerox, being mobile has never been easier. Xerox makes mobile printing simpler and more convenient, while keeping your business secure. That's why we're empowering today's mobile professionals with the freedom to send print jobs from any email-enabled device.



1 The innovative touch screen on the WorkCentre 5300 series front panel makes walk-up operation easy as can be. It features a 7-inch full-color display with bright icons and intuitive navigation for optimal ease-of-use.



2 Front-panel USB port makes it fast and easy to print from or scan to any standard USB memory device.

3 110-sheet Duplex Automatic Document Feeder (DADF) quickly processes single- or double-sided originals.

4 50-sheet bypass tray for specialty media and custom sizes.

5 The optional 2,000-sheet High Capacity Feeder* brings maximum paper capacity to 5,090 sheets.

6 Standard paper input includes your choice of two 520-sheet trays with a stand or a 2000-sheet High Capacity Tandem Tray.



7 Space-saving Integrated Office Finisher with convenient single-position stapling.

8 Office Finisher LX adds 2,000-sheet stacking, multi-position stapling and optional booklet maker.

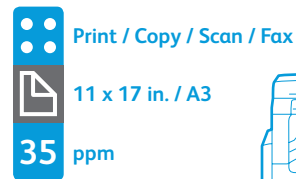


Flexibility with room to grow

Choose a powerful tabloid-size copier and add printing, scanning and faxing capabilities to optimize your workgroup's productivity. As your work volume increases, the WorkCentre 5300 series is ready to expand to meet your business needs.

WorkCentre® 5300 Series Quick Facts

- Print and copy at up to 35 ppm
- Powerful scan and fax solutions
- Print up to 11 x 17 in. / A3
- Up to 1200 x 1200 dpi print resolution
- Max paper capacity: 5,090 sheets
- Best-in-class security — Full System Common Criteria Certified (ISO 15408)
- Xerox® Workflow Solutions built on the Xerox Extensible Interface Platform® (EIP)



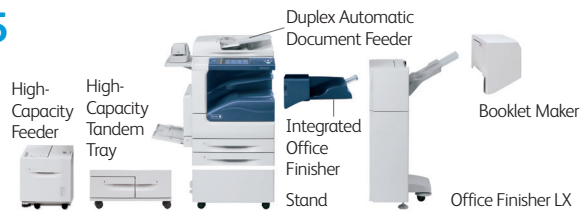
WxDxH:
23.5 x 25.1 x 43.9 in.
597 x 637.5 x 1,115 mm



WorkCentre 5335 with High-Capacity Tandem Tray

* Requires High-Capacity Tandem Tray

WorkCentre® 5325 / 5330 / 5335



		WorkCentre 5325 / 5330 / 5335 Copier	WorkCentre 5325 / 5330 / 5335 Copier/Printer/Scanner
Speed		Up to 25 / 30 / 35 ppm	
Duty Cycle		100,000 / 125,000 / 150,000 pages per month	
Memory		1 GB plus 160 GB hard drive	1 GB plus 160 GB hard drive / 2 GB with optional PostScript Kit
Paper Handling Paper input	Standard	Duplex Automatic Document Feeder: 110 sheets; Standard sizes: 5.5 x 8.5 in. / 11 x 17 in. / A5 to A3; Custom sizes: 3.3 x 4.9 in. to 11.7 x 17 in. / 85 x 125 mm to 297 x 432 mm	
	Choose one	Bypass Tray: 50 sheets; Custom sizes: 3.5 x 3.9 in. to 11.7 x 17 in. / 89 x 98 mm to 297 x 432 mm	
	Optional	Trays 1 and 2 with Stand: 520 sheets each; Sizes: Custom sizes: 5.5 x 7.2 in. to 11.7 x 17 in. / 140 x 182 mm to 297 x 432 mm High-Capacity Tandem Tray: 2,000 sheets; Standard Sizes: 8.5 x 11 in. and 7.25 x 10.5 in. / A4 or B5	
		High-Capacity Feeder*: 2,000 sheets; Standard Sizes: 8.5 x 11 in. and 7.25 x 10.5 in. / A4 or B5	
		Envelope Tray: Up to 60 envelopes: #10 commercial, Monarch, DL, C5, Custom sizes: 3.9 x 5.8 in. to 6.4 x 9.5 in. / 98 x 148 mm to 162 x 241 mm	
Paper output	Standard	Dual Catch Tray: 250-sheets each; Lower output offset	
	Optional	Integrated Office Finisher: 500-sheet stacker, 50 sheets stapled, single-position stapling	
		Office Finisher LX: 2,000-sheet stacker, 50 sheets stapled, 3-position stapling, optional hole-punch, optional booklet maker (score, saddle stitch)	
		Convenience Stapler: Staples 50 sheets	
Automatic two-sided printing	Standard		
Copy	First-page-out-time	WorkCentre 5325/5330: As fast as 4.2 seconds; WorkCentre 5335: As fast as 4.0 seconds	
Resolution (max)		600 x 600 dpi	
Copy features		Automatic two-sided, Electronic pre-collation, Automatic tray selection, Build Job, Negative/Mirror image, Automatic booklet creation, Multi-up, Auto RE, Mixed-size originals, Covers insertion, Sample set, Book copying, Annotation, Delete Outside/Delete Inside, Poster mode, Watermarks, ID Card Copy, Page Layout, Form Overlay, Background Suppression	
Print	First-page-out-time	Optional	As fast as 11.0 seconds
	Resolution (max)		1200 x 1200 dpi
	Connectivity		10/100/1000Base-TX Ethernet, High-Speed USB 2.0 direct print
	Page description languages		PCL® 5e, PCL 6, HP-GL/HP-GL2, TIFF/PDF, XPS®, Optional Adobe® PostScript® 3™
	Print features		Automatic two-sided, Secure print, Delay print, Sample set, Booklet creation, Cover selection, Paper selection by attribute, N-up, Watermarks, Banner sheets, Fit to new paper size, Output tray selection, Print from USB
	Scan		Standard
Optional		Optional	Scan to PC Desktop®, Network Scan Kit (Text Searchable PDF, MRC compression, Thumbnail Preview, Various Xerox® Business Innovation Partner Solutions)
Fax Kit	Optional	Walkup PSTN fax (one-line and three-line options) with Internet fax, Fax over IP (T.38) Kit, Network Server Fax Enablement Kit, Speed Dials (up to 2,000)	
		LAN Fax via driver, Fax Forward, Two-sided Send and Receive, Print on / Fax up to 11 x 17 in. / A3, Fax Build Job	
Accounting	Standard	Auditron	Auditron, Xerox® Standard Accounting (Copy, Print, Fax, Scan)
	Optional	NA	Network Accounting Enablement Kit (Various Xerox Business Innovation Partner Solutions)
Security	Standard	256-bit Hard Disk Encryption, Image Overwrite	Secure Print, Authentication with LDAP/Kerberos/SMB/CAC, Password Protected PDF, FIPS 140-2 encryption, S/MIME Encrypted Email, IPsec, 802.1X, SNMP v3.0, Email over SSL, LDAP over SSL, Image Overwrite, 256-bit Hard Disk Encryption, Audit Log
	Optional	NA	CAC, Secure Access Unified ID System®
Other Options		Common Access Card Enablement Kit, Foreign Device Interface, Unicode Kit	

* Requires High-Capacity Tandem Tray



For more information, call 1-800-ASK-XEROX or visit us at www.xerox.com/office



©2012 Xerox Corporation. All rights reserved. Contents of this publication may not be reproduced in any form without permission of Xerox Corporation. XEROX® and XEROX and Design® are trademarks of Xerox Corporation in the United States and/or other countries. As an ENERGY STAR® partner, Xerox Corporation has determined that this product meets the ENERGY STAR guidelines for energy efficiency. ENERGY STAR and the ENERGY STAR mark are registered U.S. marks. All other trademarks are the property of their respective manufacturers. The information in this brochure is subject to change without notice. BR146. Updated 6/12 610P730289D W5BBR-01UE